



CAGEBALL

PLUG AND PLAY

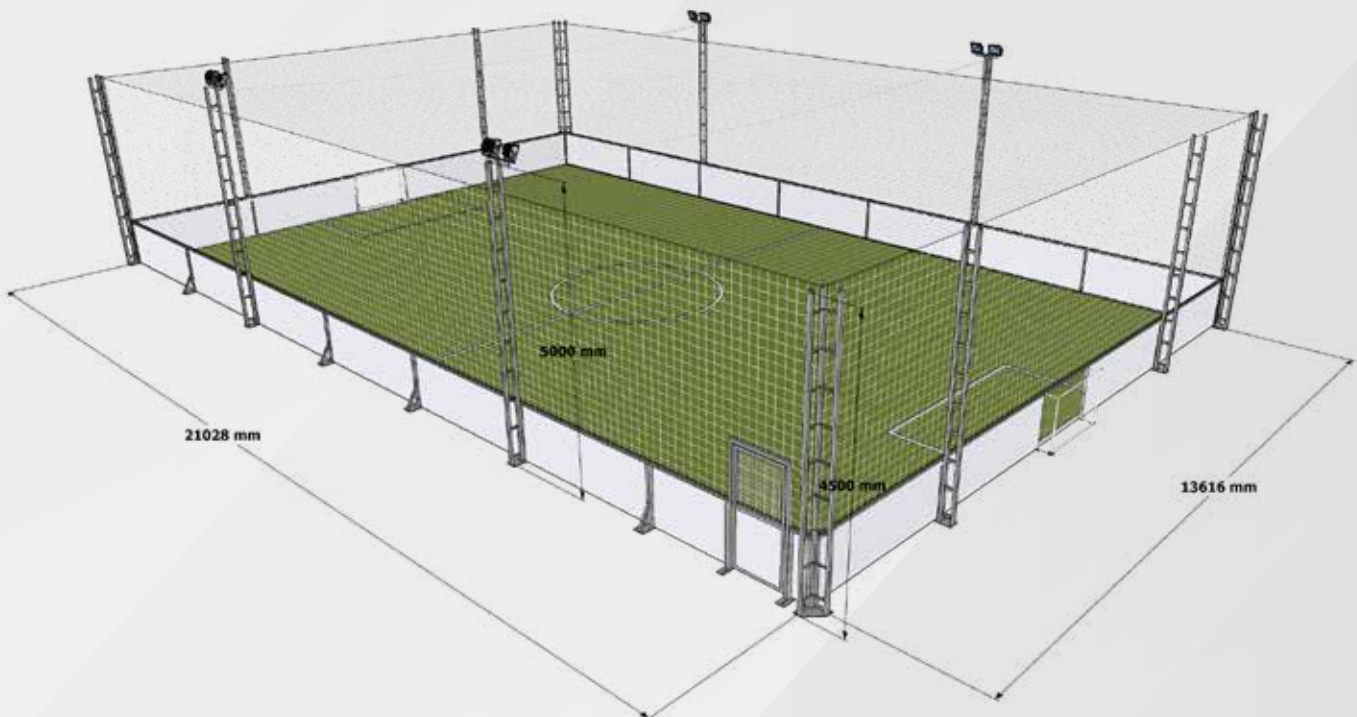
www.hatkosport.com



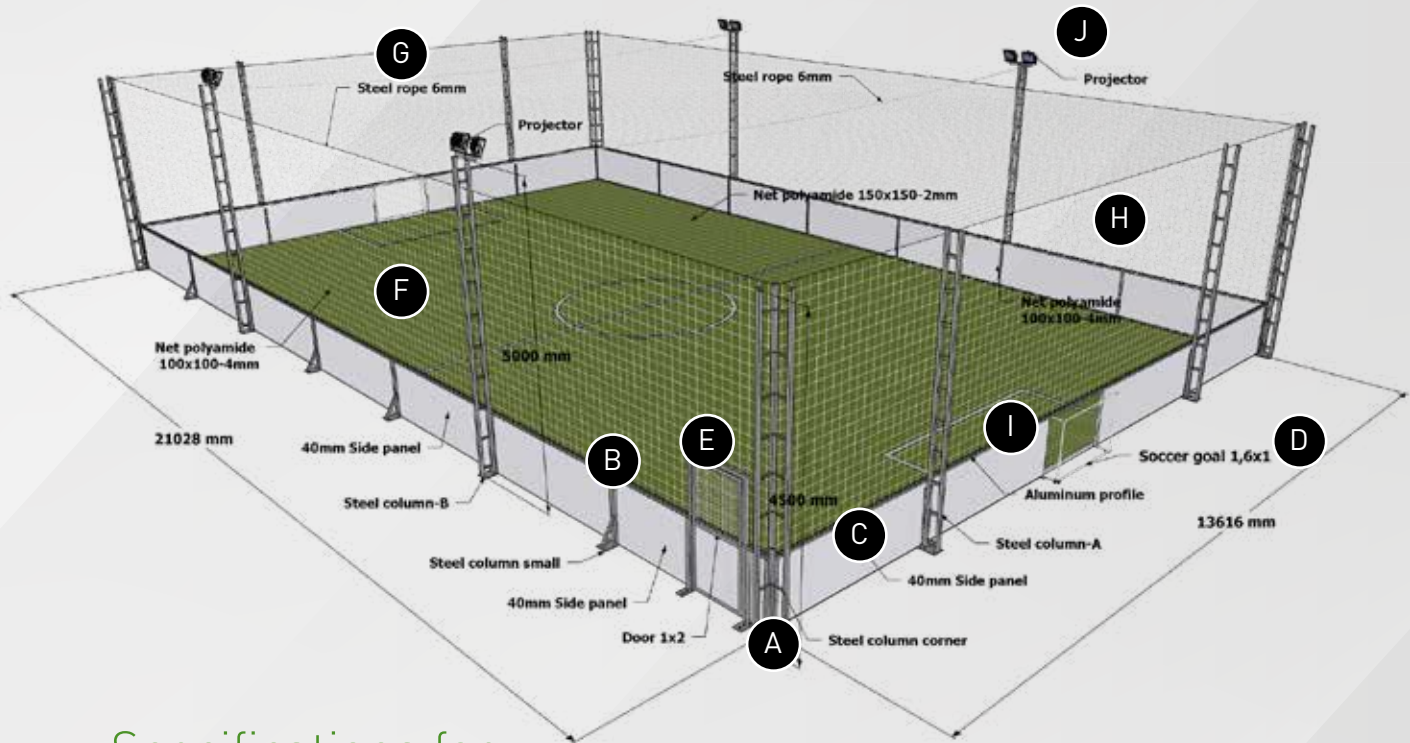
CAGEBALL *PLUG AND PLAY*

What CAGEBALL offers

- + Ideal for intensive football playing **6-10 people**
- + Fast and precise installation
- + Plug and play in **4 days**
- + All sizes and specifications can be customized
- + Efficient transportation with container utilization
- + Possibility of **single** or **multi-field** layouts
- + Can be adapted for multisport
- + Suitable for both indoor and outdoor
- + All components resistant to all weather conditions



Cageball has been invented seeking a way to play football despite bad winter conditions. Due to the enclosed environment, the ball is always in play making the game faster and more dynamic, putting greater emphasis on football technique.



Specifications for 13,6X21 playing field

- A. Long steel poles:** They keep the nets and panels standing. Corner steel poles and steel pole-A are 4.5m, and steel pole-B is 5m long. The materials are hot-dip galvanized.
- B. Short steel poles:** It connects the perimeter sandwich panels to each other. The materials are hot-dip galvanized.
- C. Panels:** The sandwich panel thickness is 40mm. The panel dimensions are 1m x 3m.
- D. Goals:** The goal dimensions are 1m x 1,6m. It can be produced in desired dimensions according to the field size and customer demand.
- E. Door:** The door dimensions are 1m x 2m. Can be produced in desired dimensions according to customer demand.
- F. Artificial turf:** We have various carpets of different thickness and density.
- G. Top net:** The net mesh thickness is 2mm, and the mesh spacing is 150mm
- H. Side net:** The net mesh thickness is 4mm, and the mesh spacing is 100mm.
- I. Aluminum profile:** Special aluminum profiles with oval edges that do not harm the athlete are used to connect the side nets to the panels.
- J. Projector:** LED projectors with different features can be selected according to the dimensions of the 8 units of 120W LED projectors are sufficient for playground lighting. IP66 protection class: Provides protection against dust and high-pressure water from all directions.



CAGEBALL *PLUG AND PLAY*



Shockpads For Standard Fields



Non-Infill Grass System



Shockpads and Cork

- + Natural look with no-odor
- + Offers highly durable, stable and safe surface
- + Requires minimal maintenance
- + Soft finish providing better player comfort with minimal skin abrasions
- + **Standard field:** Suitable for permanent fields using Aircell foam type shockpads



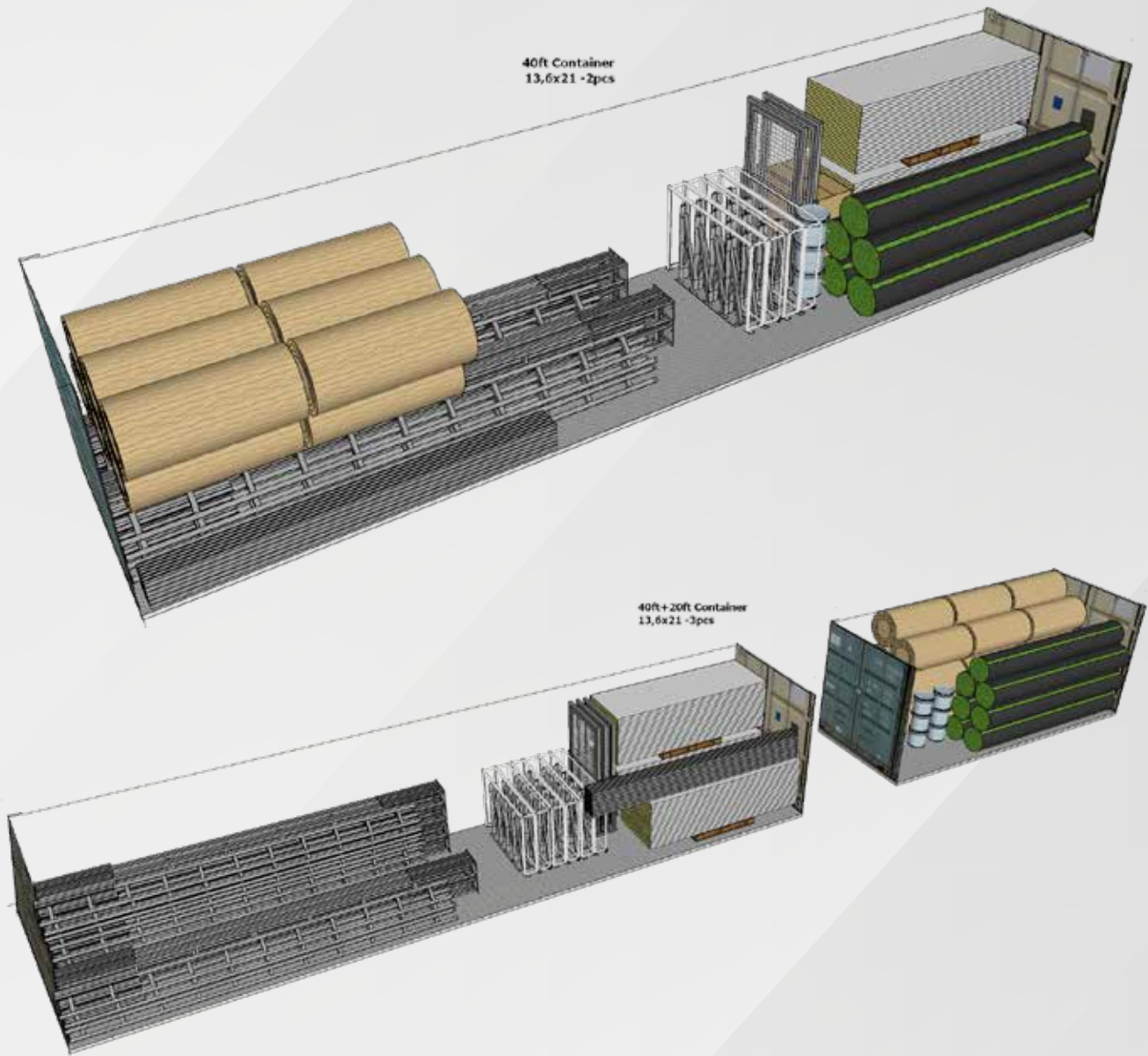
CAGEBALL *PLUG AND PLAY*

Equipment required for installation





CAGEBALL *PLUG AND PLAY*

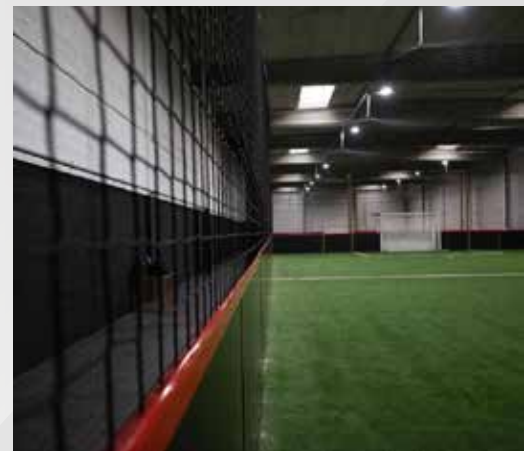


Efficient Transportation

- + One 5-foot unit can fit into a 40ft container.
- + Two 5-foot units can fit into a 40ft + 20ft container.



Free-standing indoor application



www.hatkosport.com/cageball

Contact us to get a free consultation inquiry@hatkosport.com



www.hatkosport.com